

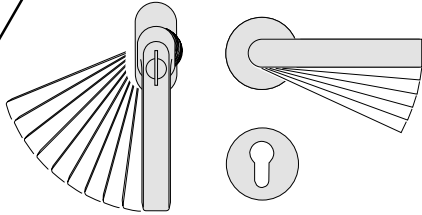


Toulon – Distinctive shape  
and proven technology

For all HOPPE door and window handles ...



**HOPPE**



**10-year  
operational  
guarantee**

## Window handles

---



0737S/US947-1  
(100 Nm)  
page 4



0737S/U947  
page 4



0737SVS/U947  
page 5



0737SV/U947  
page 5



0737/US947  
page 6

## French door sets

---



0737KH/51N/  
U34/0737/  
51NS/51PNS  
page 6



0737FA/51N/  
U34/0737/  
51NS/51PNS  
page 7



Pull handle  
535  
page 7

## Parallel slide/tilt door handle

---



PSK-0737S/  
US947-1  
(100 Nm)  
page 8



PSK-0737/  
US947-1  
page 8



HS-0737/419/  
420 and  
HS-0737/419  
page 9

## Lift/slide door handle sets

---



Secu100®  
Secustik®

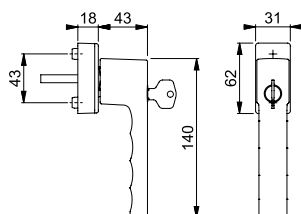
## 0737S/US947-1 (100 Nm)



HOPPE aluminium lockable turn/tilt window handle with **Secu100® + Secustik®**:

- Tested to **RAL-GZ 607/9, RAL100**; meets the requirements of **DIN EN 1627-1630 RC1-6**
- Locking mechanism: push cylinder, reversible key
- Stop-in position: 90°
- Cover: partial cover cap
- Base: nylon, supporting lugs
- Spindle: HOPPE solid spindle
- Fixing: concealed, M5 thread screws

Article description	Projecting		Lugs Ø	F1	F9	F8707	F9016	P.U.	O.C.
				Article no.	Article no.	Article no.	Article no.		
Lockable turn/tilt window handle with Secu100® + Secustik®	32	7	10	<b>3937190</b>	3937309	3937384	3937413	10	40
	37	7	10	3937202	3937325	3937392	3937421	10	40
	43	7	10	3937211	3937333	3937405	3937430	10	40



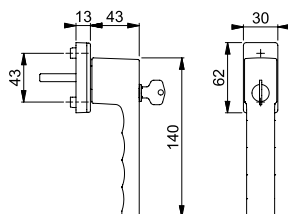
SecuTBT®

## 0737S/U947 (TBT4)

HOPPE aluminium lockable window handle with **SecuTBT®**:

- Locking mechanism: turn cylinder, reversible key, lockable in the 0° and 90° position, automatic locking function
- Stop-in position: 90°
- Cover: partial cover cap
- Base: nylon, supporting lugs
- Spindle: HOPPE solid spindle
- Fixing: concealed, M5 thread screws

Article description	Projecting		Lugs Ø	F1	F9	F8707	F9016	P.U.	O.C.
				Article no.	Article no.	Article no.	Article no.		
Lockable window handle with SecuTBT	32	7	10	<b>3937851</b>	3937940	3937974	3938029	10	40
	37	7	10	3937860	3937958	3937982	3938037	10	40
	43	7	10	3937878	3937966	3938002	3938045	10	40




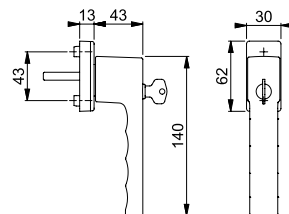


### 0737SVS/U947

HOPPE aluminium lockable turn/tilt window handle with **SecuDuplex**:

- Locking mechanism: push button locking cylinder, reversible key
- Stop-in position: 90°
- Cover: partial cover cap
- Base: nylon, supporting lugs
- Spindle: HOPPE solid spindle
- Fixing: concealed, M5 thread screws


Article description	Projecting		Lugs Ø	F1	F9	F8707	F9016	P.U.	O.C.
				Article no.	Article no.	Article no.	Article no.		
Lockable turn/tilt window handle with SecuDuplex	32	7	10	<b>3937641</b>	3937747	3937780	3937819	10	40
	37	7	10	3937659	3937755	3937798	3937827	10	40
	43	7	10	3937667	3937763	3937801	3937835	10	40

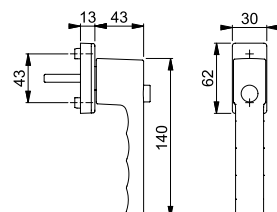


### 0737SV/U947

HOPPE aluminium turn/tilt window handle with push button:

- Stop-in position: 90°
- Cover: partial cover cap
- Base: nylon, supporting lugs
- Spindle: HOPPE solid spindle
- Fixing: concealed, M5 thread screws

Article description	Projecting		Lugs Ø	F1	F9	F8707	F9016	P.U.	O.C.
				Article no.	Article no.	Article no.	Article no.		
Turn/tilt window handle with push button	32	7	10	<b>3937448</b>	3937536	3937561	3937608	10	40
	37	7	10	3937456	3937544	3937587	3937616	10	40
	43	7	10	3937464	3937552	3937595	3937624	10	40



# Window handles, French door sets



Secustik®

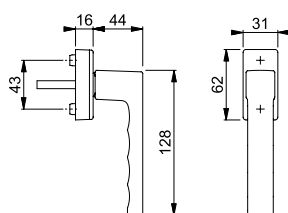
## 0737/US947



HOPPE aluminium turn/tilt window handle with adjustable spindle and **Secustik®**:

- Tested to **RAL-GZ 607/9**
- Stop-in position: 90°
- Cover: partial cover cap
- Base: nylon, supporting lugs
- Spindle: HOPPE solid spindle, adjustable length of 10mm, smooth adjustment thanks to the pressure spring integrated in the handle neck
- Fixing: concealed, M5 thread screws

Article description	Projecting		Lugs Ø	F1	F9	F8707	F9016	P.U.	O.C.
				Article no.	Article no.	Article no.	Article no.		
Turn/tilt window handle with Secustik®	32-42	7	10	<b>3937114</b>	3937157	3937173	3937181	10	60

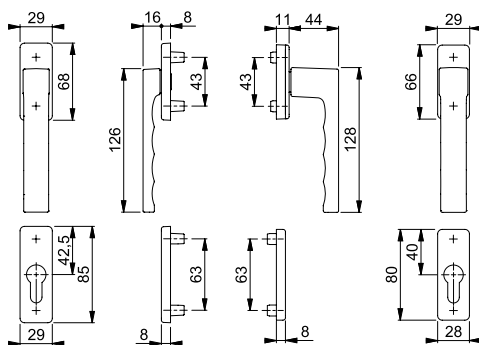


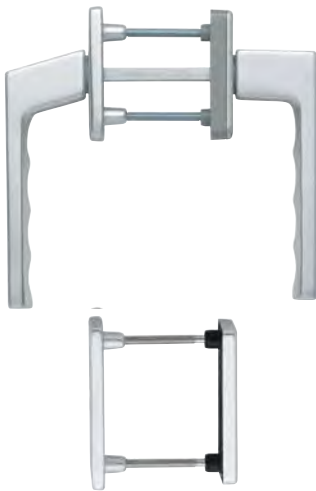
## 0737KH/51N/U34/0737/51NS/51PNS

HOPPE aluminium turn/tilt window handle set with escutcheons for French doors, exterior with short neck:

- Stop-in position: outside: none; inside: 90°
- Escutcheons: outside: cast, inside: nylon base with partial cover cap, supporting lugs
- Spindle: HOPPE solid spindle
- Fixing: concealed, from inside, bolt-through, M5 thread screws

Article description			Lugs Ø	F1	F9	F8707	F9016	P.U.	O.C.
				Article no.	Article no.	Article no.	Article no.		
Turn/tilt window handle set with escutcheons, exterior with short neck	63-73	7	10	<b>3937739</b>	3938011	3938053	3938117	1	10

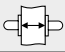



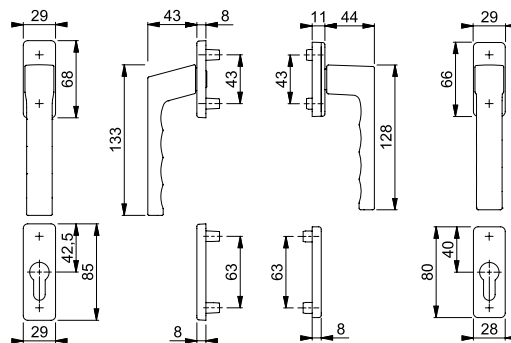


### 0737FA/51N/U34/0737/51NS/51PNS

HOPPE aluminium turn/tilt window handle set with escutcheons for French doors:

- Stop-in position: outside: none; inside: 90°
- Escutcheons: outside: cast, inside: nylon base with partial cover cap, supporting lugs
- Spindle: HOPPE solid spindle
- Fixing: concealed, from inside, bolt-through, M5 thread screws


Article description			Lugs Ø	F1	F9	F8707	F9016	P.U.	O.C.
				Article no.	Article no.	Article no.	Article no.		
Turn/tilt window handle with escutcheons	63-73	7	10	<b>3938176</b>	3938205	3938213	3938221	1	10

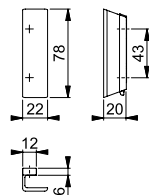


### 535

HOPPE aluminium pull handle for French doors:

- Fixing: visible, multi-purpose screws

Article description								P.U.	O.C.
Pull handle									50



# Parallel slide/tilt door handle




Secu100®  
Secustik®

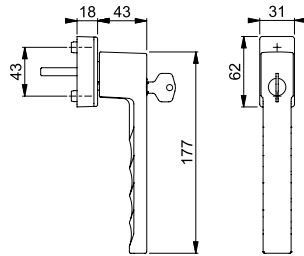
## PSK-0737S/US947-1 (100 Nm)



HOPPE aluminium lockable handle with **Secu100® + Secustik®** for tilt/slide doors:

- Tested to **RAL-GZ 607/9, RAL100**; meets the requirements of **DIN EN 1627-1630 RC1-6**
- Locking mechanism: push cylinder, reversible key
- Stop-in position: 90°
- Cover: partial cover cap
- Base: nylon, supporting lugs
- Spindle: HOPPE solid spindle
- Fixing: concealed, M5 thread screws

Article description	Projecting		Lugs Ø	F1	F9	F8707	F9016	P.U.	O.C.
				Article no.	Article no.	Article no.	Article no.		
Lockable handle with Secu100® + Secustik® for tilt/slide doors	32	7	10	<b>3938871</b>	3938969	3938993	3939021	2	20
	37	7	10	3938889	3938977	3939005	3939030	2	20
	43	7	10	3938897	3938985	3939013	3939048	2	20




Secustik®

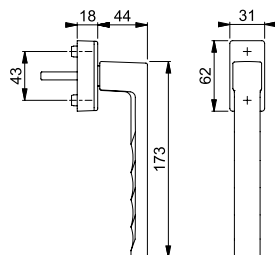
## PSK-0737/US947-1



HOPPE aluminium handle with **Secustik®** for tilt/slide doors:

- Tested to **RAL-GZ 607/9**
- Stop-in position: 90°
- Cover: partial cover cap
- Base: nylon, supporting lugs
- Spindle: HOPPE solid spindle
- Fixing: concealed, M5 thread screws

Article description	Projecting		Lugs Ø	F1	F9	F8707	F9016	P.U.	O.C.
				Article no.	Article no.	Article no.	Article no.		
Handle with Secustik® for tilt/slide doors	32	7	10	<b>3938555</b>	3938694	3938723	3938758	10	40
	37	7	10	3938580	3938707	3938731	3938766	10	40
	43	7	10	3938619	3938715	3938740	3938774	10	40



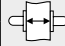





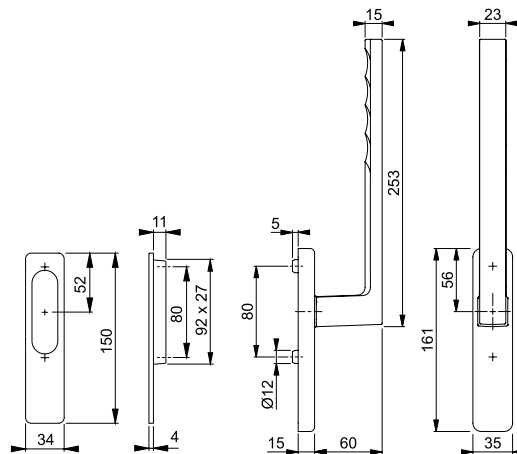


## HS-0737/419/420 and HS-0737/419

HOPPE aluminium lift/slide handle set for patio doors, exterior with recessed pull:

- Bearing: fixed/movable handle
- Stop-in position: 180°
- Base: outside: none, inside: zamak, supporting lugs
- Spindle: HOPPE solid spindle with radiused edges
- Fixing: concealed, bolt-trough, M6 thread screws

Article description			Keyhole	F1	F9	F8707	F9016	P.U.	O.C.	
				Article no.	Article no.	Article no.	Article no.			
Lift/slide handle set, exterior with recessed pull, HS-0737/419/420	68-73	10	without	<b>3938230</b>	3938272	3938281	3938299	1	4	
				69	3945190	3945229	3945237	3945245	1	4
Lift/slide handle set pair, HS-0737/419	65-75	10		69	3938301	3938352	3938361	3938379	1	4



## Secustik®

- **Secustik® technology**

Window handles with Secustik® technology hinder unauthorised tampering with the window fitting from outside by an integrated jamming mechanism. The precision clicking of the blocking mechanism when engaging itself is the audible sign of more security for your windows.

## SecuDuplex

- **SecuDuplex window handle with innovative double function**

With the SecuDuplex window handle and its double function, the handle can only be moved when the push button locking cylinder is unlocked and then pressed when turning. This means, once unlocked with the key, the handle can only be moved by pressing the push button locking cylinder, too. If the push button locking cylinder is not pressed, the handle remains locked in the 0° closed or 180° tilt position.

## Secu100®

- **Secu100® technology**

The Secu100® technology prevents the turning and pulling off of the window handle up to a torque of 100 Nm\*.

\* 1 Nm (Newton metre) is equal to the torque resulting from a force of one Newton applied perpendicularly to a lever arm which is 1 metre long.

## Secu100® Secustik®

- **Secu100® + Secustik® technology**

The Secu100® + Secustik® combines the Secu100® with Secustik® technology. With this, not only is there a high degree of safety when locked, but also an in-built permanent, basic security even when unlocked.

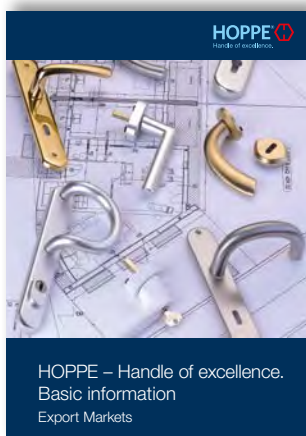
## SecuTBT

- **SecuTBT operation**

SecuTBT window handles are suitable for TBT(Tilt Before Turn) window hardware only, TBT meaning the sequence of opening and closing the window: closed - tilted - turned open.


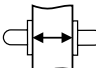


- **Secustik® technology with adjustable spindle**

A single window handle for a range of window profiles: The Secustik® window handle with adjustable spindle adapts to the depth of the individual window profile, can be used with an installation depth range of up to 10 mm and has been tested to RAL. It can be installed with ease and flexibility on window profiles of various depths. The integrated Secustik® technology hinders movement of the window fitting and turning of the spindle from outside.



Further details about the HOPPE technologies can be found in our manual: HOPPE – Handle of excellence. Basic information.

## Explanation of symbols

	Profile cylinder
	Door thickness (in mm)
	Spindle size (in mm)
	RAL-tested products (German institute for quality assurance and marking)
<p><b>duraplus®</b></p>	HOPPE divides its product range into three lines based on the customers' different requirements in price and perception of value – <b>duravert®</b> , <b>duraplus®</b> and <b>duranorm®</b> . <b>duraplus®</b> stands for the medium product line.

## Finishes



## Material description aluminium

The surface of HOPPE aluminium fittings is protected by either anodising or powder coating. Anodising consists of a controlled, electrically induced oxidation process with the aid of sulphuric acid, which causes the base material to bond with oxygen and to grow a protective surface layer, the so-called oxide film. This film protects the products against detrimental influences such as hand perspiration, humidity and light mechanical stress.

In powder coating, the coating powder is applied to the aluminium surface by means of an electrostatic process. It is then heated to a temperature of 150°-200°C causing the paint particles to melt to a film of paint in a chemical cross-linking reaction.

There is no known risk to health in aluminium hardware. No special care is needed for aluminium as the oxide film protects it. Dirt can easily be removed with a damp cloth.

HOPPE AG · Representative Office Middle East  
LOB 15, Office 302 · P.O. Box 261833 · Jebel Ali Free Zone · UAE-Dubai  
Tel. +9714 887 00 58 · [www.hoppe.com](http://www.hoppe.com)  
Fax +9714 887 61 95 · [info.gcc@hoppe.com](mailto:info.gcc@hoppe.com)  
Mobile +97150 455 09 97

HOPPE AG · Via Friedrich Hoppe · CH-7537 Müstair  
Tel. +41 (0)81 851 66 00 · [www.hoppe.com](http://www.hoppe.com)  
Fax +41 (0)81 851 66 66 · [info.ch@hoppe.com](mailto:info.ch@hoppe.com)